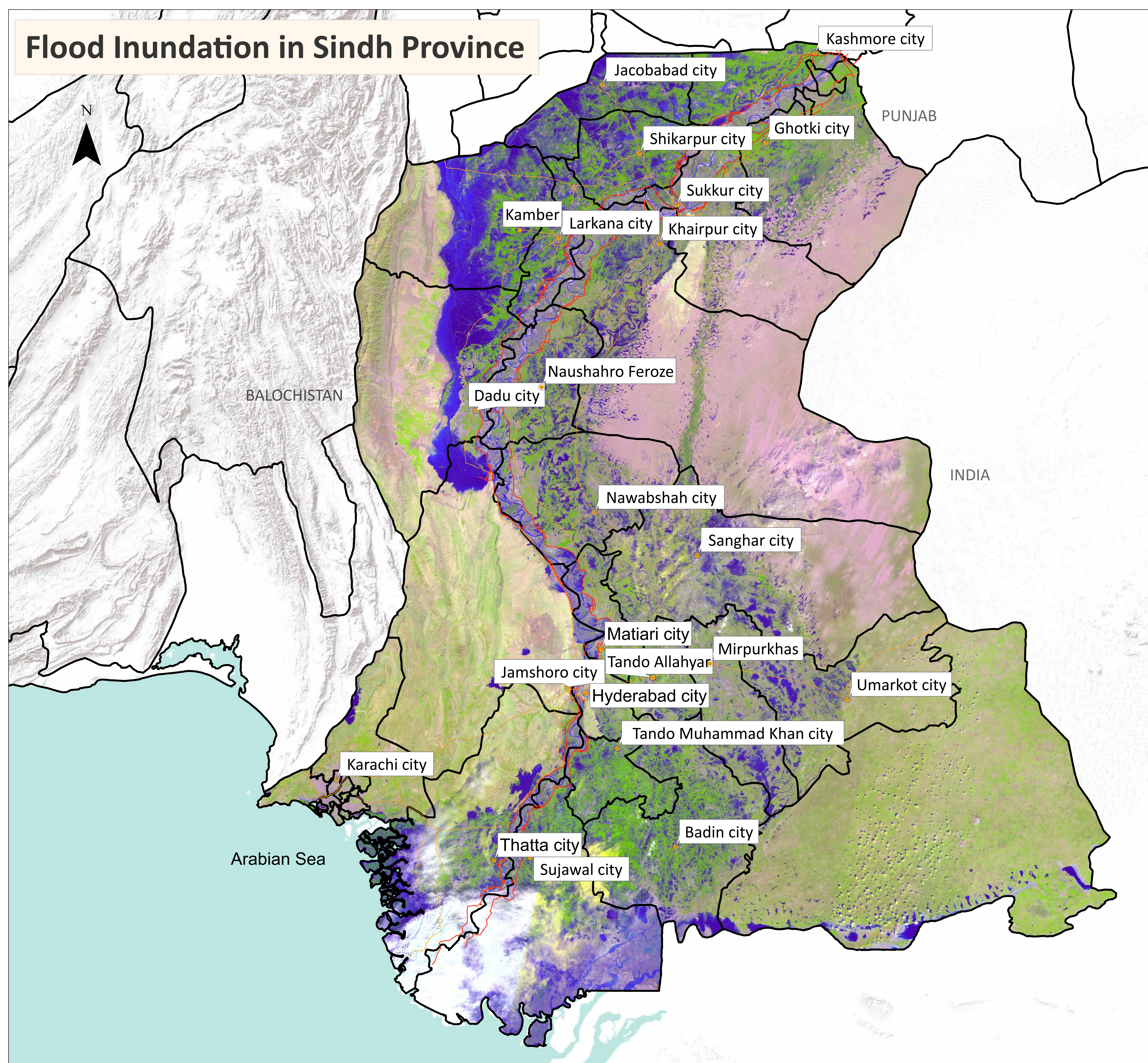


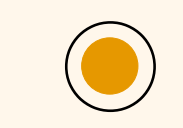

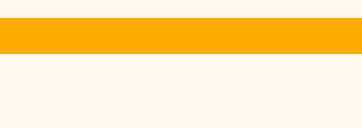

# Flood Inundation in Sindh Province



S.no	District	Total Area in Sq.Km	Previous Inundation in Sq.Km (23/9/2022)	Current Inundation in Sq.Km (08-10-2022)
1	Kashmore	2,549.03	473.49	444.71
2	Jacobabad	2,769.36	1,014.74	899.13
3	Shikarpur	2,576.89	699.27	607.41
4	Larkana	1,906.34	526.41	392.05
5	Kamber Shahdadkot	5,596.44	2,180.60	1,856.88
6	Dadu	8,032	1,678.92	1,424.46
7	Naushahro Feroze	3,025.48	619.28	477.95
8	SBA	4,615.16	848.99	564.17
9	Sanghar	10,259.02	950.09	686.54
10	Jamshoro	11,250.32	875.95	606.7
11	Hyderabad	1,021.54	126.34	95.98
12	Matiari	1,458.04	404.87	176.47
13	Tando Allah Yar	1,572.86	148.59	93.36
14	Tando Muhammad Khan	1,813	127	115.19
15	Badin	6,470	609	587.51
16	Sujawal	8,699.20	2,014.59	1454.56
17	Thatta	7,704	1,172.97	1060.74
18	Sukkur	5,212.05	363.11	277.389
19	Khairpur	15,925.04	826.64	727.41
20	Ghotki	6,506.18	288.54	244.61
21	Mirpurkhas	3,319.16	453.96	322.88
22	Umerkot	5,502.92	409.58	322.13
<b>Total</b>		<b>117,784.49</b>	<b>16,812.93</b>	<b>13,438.23</b>

**Disclaimer:** 15m resolution satellite Images has been used for preliminary damage assessment and depicts status of flood inundation as of image acquisition date.

**Source:** Landsat 9 Collection 2, 08 October 5: 51 GMT

-  Major Cities/ Town
-  District Boundary
-  Highway /Motorway
-  Embankment

